



Child Care Needs Assessment 2009

Assessing the child care supply, demand & need in Herkimer, Madison & Oneida counties

Compiled by

Mid-York Child Care Coordinating Council, Inc.

Made possible with funding from the New York State Office of Children and Family Services

Table of Contents

Part I—Child Care Supply

Part II—Child Demographics & Child Care Demand

Part III—Utilization

Part IV—Parent Information

Child Care Referral Information

Parent Survey by Zogby International

Appendix 1—Child Care Program Definitions

Appendix 2—Child Care Program Teacher to Child Ratios

Information for this needs assessment has been obtained from the following sources:

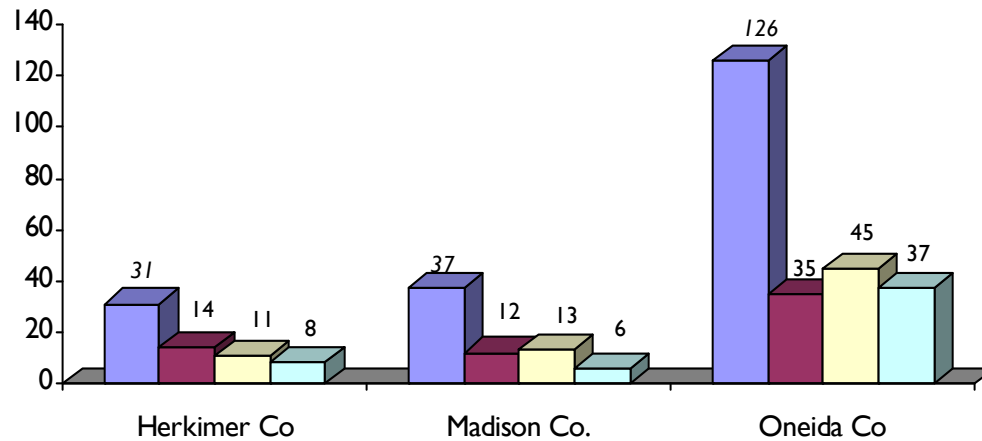
- Child demographic information is reflective of the 2000 U.S. Census, Additional information on county-by-county demographics was obtained from the U.S. Census Bureau, American FactFinder, <http://factfinder.census.gov>.
- Child Care supply and potential slot information has been obtained through information maintained by the NYS Bureau of Early Childhood Services, Office of Children and Family Services (1/09).
- Child care demand information determined using information gathered from the Census 2000 American Fact Finder.
- Child care utilization and referral and parent follow-up information has been compiled through records maintained by the Mid-York Child Care Coordinating Council on its child care referral database, NACCRAware.
- Information on legally exempt child care was gathered from Mid-York Child Care Coordinating Council, Inc. generated data as well as from information maintained by local county departments of social services.
- All other information in this assessment has been gathered from information gathered by the Mid-York Child Care Council and maintained in their databases.

Part I: Child Care Supply

Number of NYS regulated child care programs & number potential of family/group family child care slots

NYS Regulated Child Care Programs,

by county

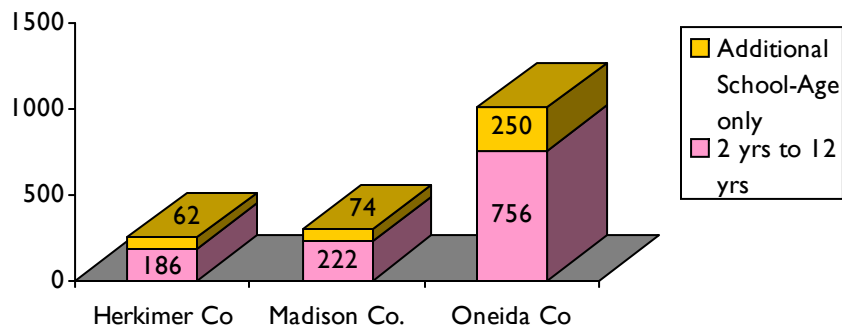


The chart at the right illustrates the number of regulated child care programs by modality and county. Regulated programs are those which comply with New York State Office of Children and Family child care regulations to care for children.

The graphs below illustrate the number of potential family and group family child care slots in each county. **Potential child care slots are the maximum number of slots a program is registered or licensed to serve, regardless of whether or not the slot is currently filled or vacant.** While family and group family child care providers may choose to care for a limited number of children under age 2 years, in doing so the total number of potential slots they may fill decreases. For the purpose of this document, the number of potential slots is reported as those for children age 2 years and older, as reported by NYS OCFS.

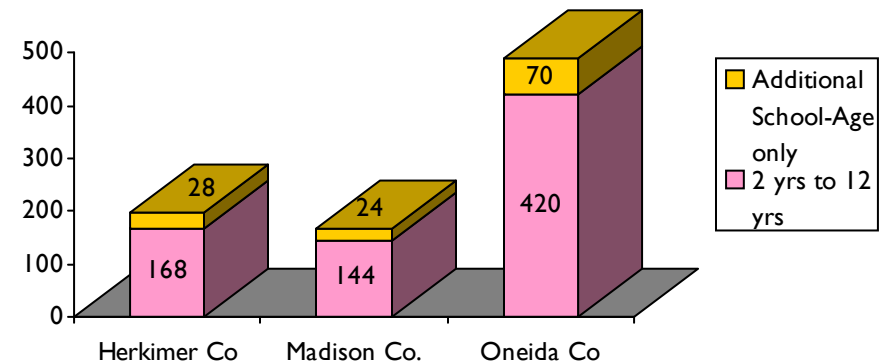
Potential Family Child Care Slots,

by county



Potential Group Family Child Care Slots,

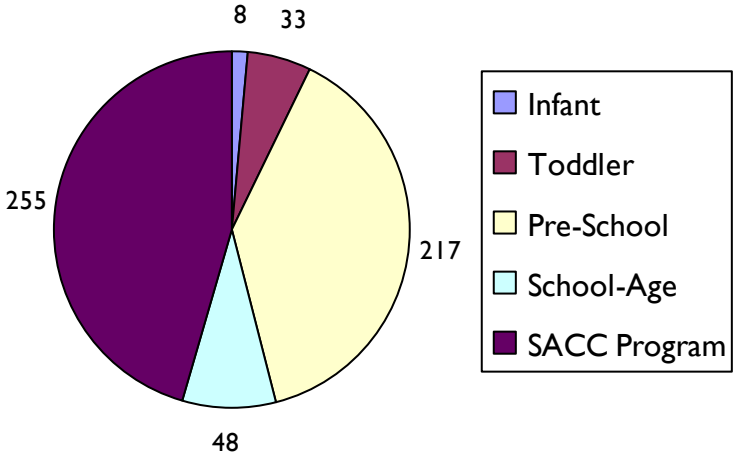
by county



Part I: Child Care Supply
*Potential Child Care Center, Head Start and SACC Program Slots,
 by county & age group*

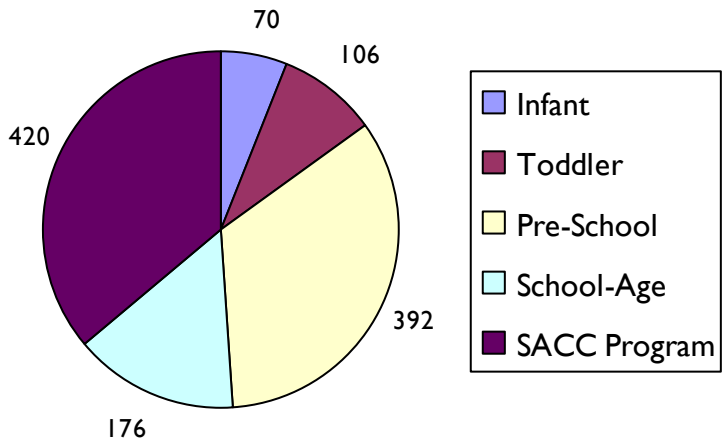
Herkimer County Child Care Slots,

by age group



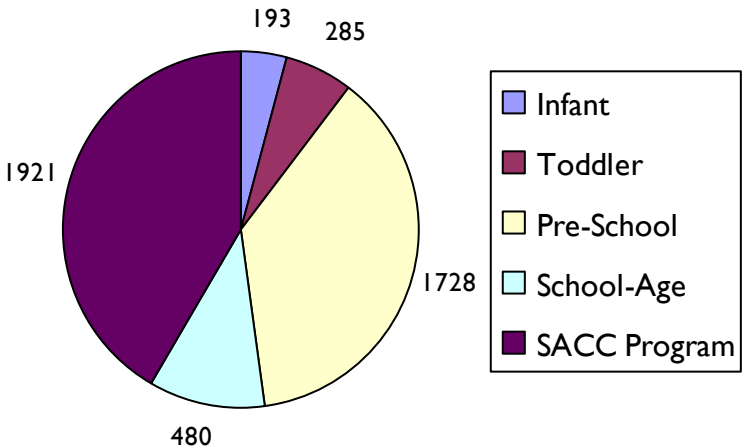
Madison County Child Care Slots,

by age group



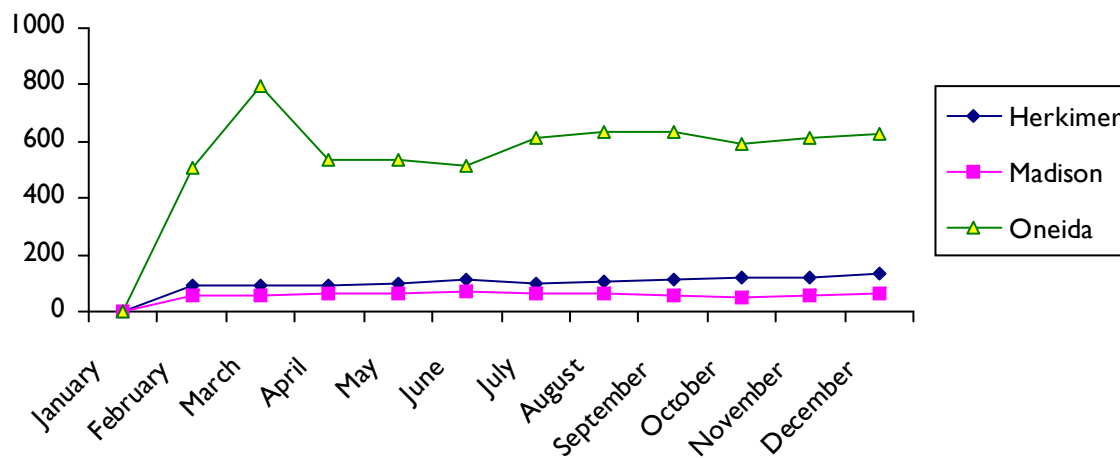
Oneida County Child Care Slots,

by age group



The graphs on this page indicate the number of potential child care slots for child care centers and school-age child care programs by age group (see page 15 for information on age groups and staff-child ratios). **Potential child care slots are the maximum number of slots a program is registered or licensed to serve, regardless of whether or not the slot is currently filled or vacant.** As the graphs indicate, there is a significant lack of child care slots for infants and toddlers. Not every child care center provides care for these younger children. In fact, in Herkimer County, only one of 11 child care centers and Head Start Programs offer care for infants; four of these programs offer care for toddlers. In Madison County, 7 of 13 programs offer care for both infants and toddlers. In Oneida County, 16 of 45 programs offer infant care and 21 programs offer toddler care.

**Number of Approved Legally Exempt
Child Care Providers,**
by county & month

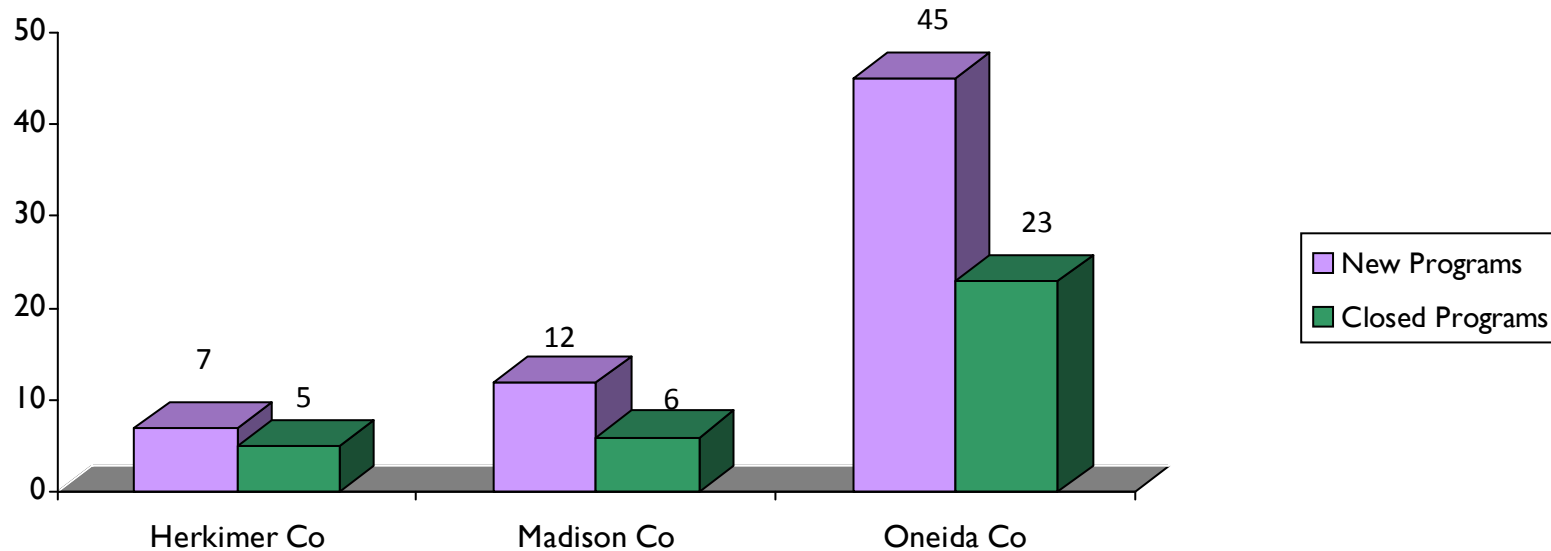


Effective July 31, 2006, the NYS Office of Children and Family Services implemented regulations pertaining to legally exempt child care providers. The regulations require that child care resource and referral agencies across New York State are responsible for approving and enrolling legally exempt providers.

With the implementation of the regulations, the Child Care Council reviews and processes legally exempt applications. The number of legally exempt providers illustrated in this graph represents the number of legally exempt child care providers approved to provide care in each of the Child Care Council's counties of service during 2008.

Part I: Child Care Supply

Programs opened and closed in 2008



While the Child Care Council was somewhat successful in recruiting new child care programs during 2008, the number of total programs (including family/group family child care programs, child care centers, Head Start programs & SACC programs) in each county remained nearly constant because of the closing of existing programs.

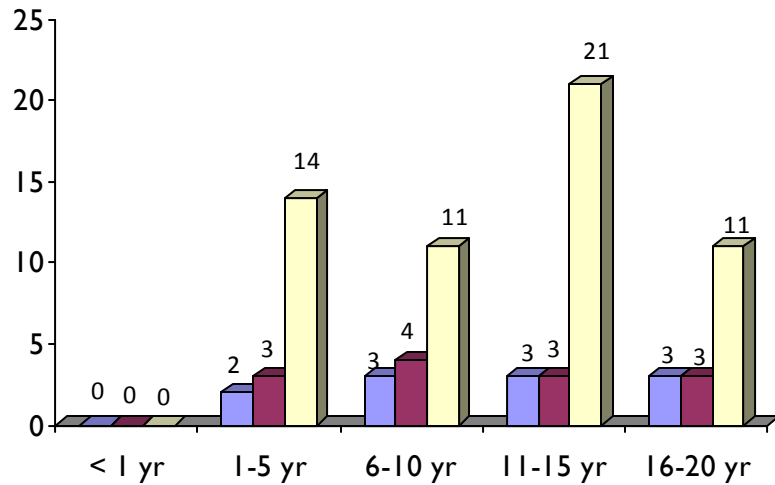
As the graph on this page indicates, in 2008:

- 7 new programs opened in Herkimer County, and 5 closed
- 12 new programs opened in Madison County, and 6 closed
- 45 new programs opened in Oneida County, and 23 closed

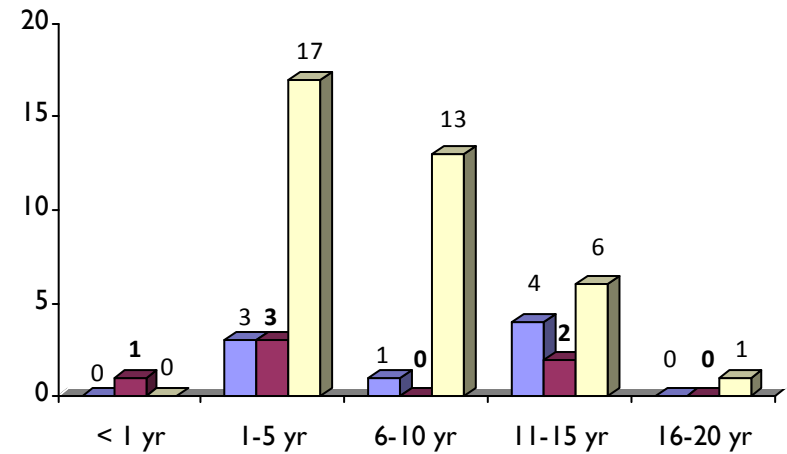
The Child Care Council's referral specialists attempt to conduct formal exit interviews with closing programs. The results of the exit interviews, along with information gathered through informal interviews, indicates the main reasons for programs ceasing their child care operation are: found other employment (28 percent), retired and/or retired to do informal care (20 percent), closed/revoked by licenser (16 percent), licensing issues (12 percent), lack of enrollment (8 percent) and closed due to illness (4 percent).

Part I: Child Care Supply
Child Care Program Longevity

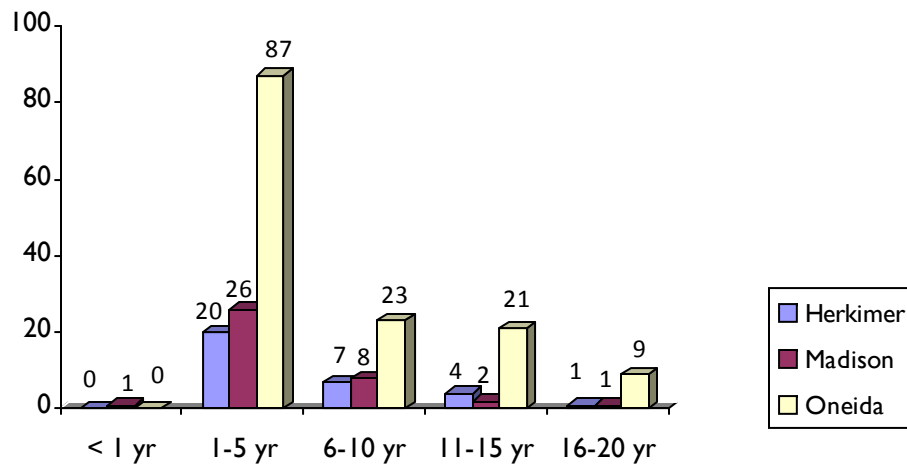
Child Care Center Longevity



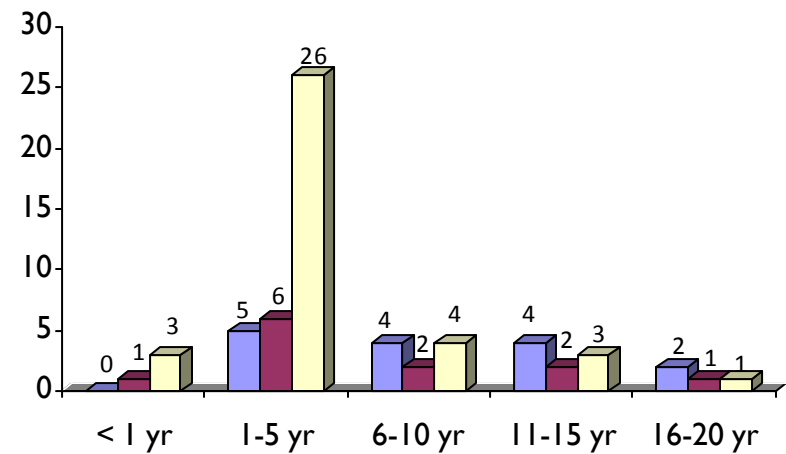
School Age Care Program Longevity



Family Child Care Provider Longevity



Group Family Child Care Provider Longevity



The graphs on this page illustrate the longevity of child care programs within Herkimer, Madison and Oneida counties.

Part II: Demand for Care

Child demographics

Population of Children birth—12 years-old in Herkimer, Madison & Oneida Counties

Age of Child	Herkimer Co	Madison Co	Oneida Co
Under 1	670	759	2556
1-2 yrs	1402	1669	5351
3—4 yrs	1519	1676	5441
5—7 yrs	2566	2744	9158
8—10 yrs	2806	3061	10,027
11—12 yrs	1821	2025	6730
TOTAL	10,784	11,934	39,263

In Herkimer County, children birth to 12-years-old consist of 16.7 percent of the county's population. The median household income is \$40,726. 7.7 percent of all families have had an income below the poverty level; this percent increases to 18.5 of all families with children under 5-years-old, and 38.4 percent of single parent, female households with children under 5-years-old.

In Madison County, children birth to 12-years-old consist of 17.2 percent of the county's total population. The county's median household income is \$61,853. 7.2 percent of all families have an income below the poverty level; this percentage increases to 9.8 of all families with children under 5-years-old and 33.5 percent of single parent, female households with children under 5-years-old.

16.7 percent of Oneida County's population consists of children birth to 12-years-old. The county's mean household income is \$54,967. 11.3 percent of all families have an income below the poverty level; this number increases to 20.9 percent of families with children under age 5, and 49.3 percent of single parent, female households with children under 5 years.

Who Needs Care?

Information based on child care demand is based on information compiled in KIDS Count 2000, labor force statistics indicate that in New York State:

⇒ 55 percent of children age 0—5 are likely to need child care

Of that 55 percent:

- ◇ 22 percent will utilize child care centers
- ◇ 21 percent will utilize nursery school programs
- ◇ 12 percent will utilize family child care
- ◇ 45 percent will utilize another form of care

⇒ 45 percent of children ages 6—13 are likely to need child care before and/or after school and/or on school vacations.

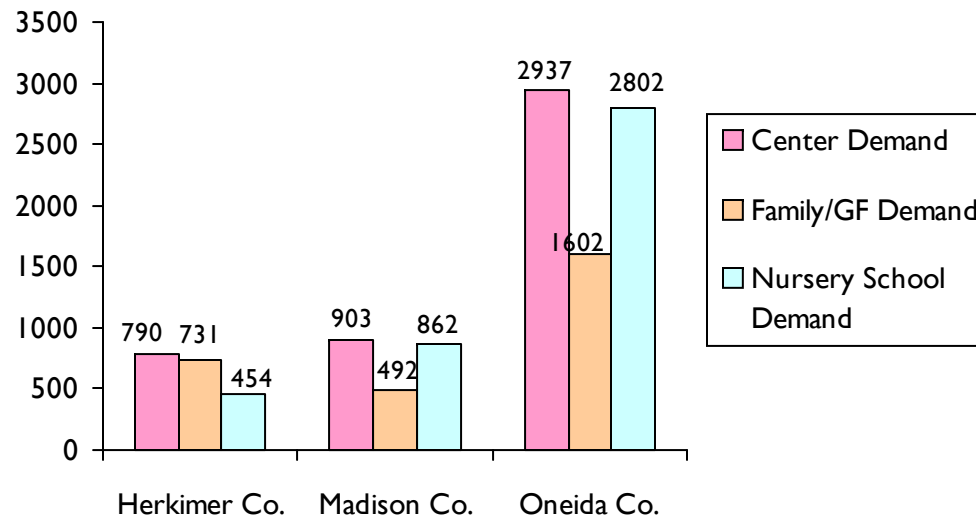
For information on the type of care utilized by families locally, see page 12. The demand for child care considers all children who are in need of care, regardless of the type of child care program they currently utilize, including regulated child care programs (see page 17 for definitions) or non-regulated care (see page 17 for definitions).

The graphs on the follow page outline the current supply of regulated child care slots, and, based on the current demand for child care, the unmet need for additional child care slots.

Part II: Demand for Child Care Potential Need Children 6 wks—5 yrs

Potential Child Care Demand

by modality, children 6 wks to 5 yrs



Utilizing the percentages estimated in “Who Needs Care” on page 7 of this assessment, the graph on the left illustrates the potential demand of child care slots for children six-weeks to five-years-old by modality of care that includes child care centers, family/group family child care homes and nursery schools.

The graph on the right illustrates the total potential demand for child care (yellow), the number of current child care slots (blue) as well as an estimation of potential unmet need (red) for children six-weeks to five-years-old.

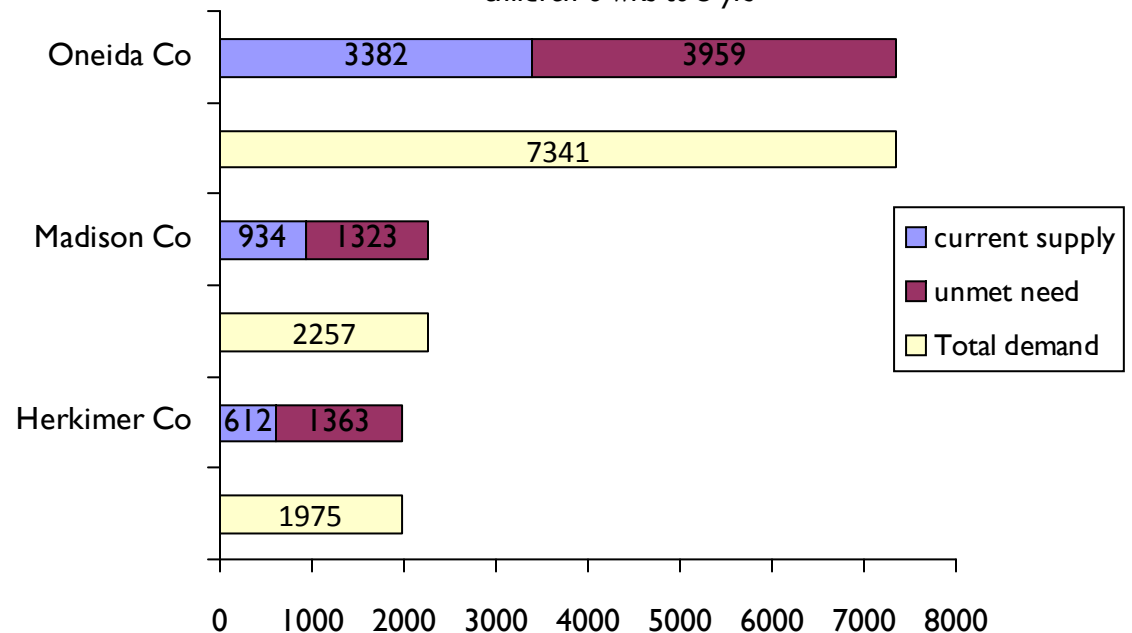
Based on this graph, for each potential child care slot:

- ◆ 2 Herkimer County children are in need of care
- ◆ 1.5 Madison County children are in need of care
- ◆ 1 Oneida County child is in need of care

Note: The potential unmet demand for child care does not take into account children who are currently cared for by legally exempt child care providers, in-home nannies, friends, relatives or other unregulated types of care. Supply and demand of care also varies significantly depending on the age of the child and the location care is sought.

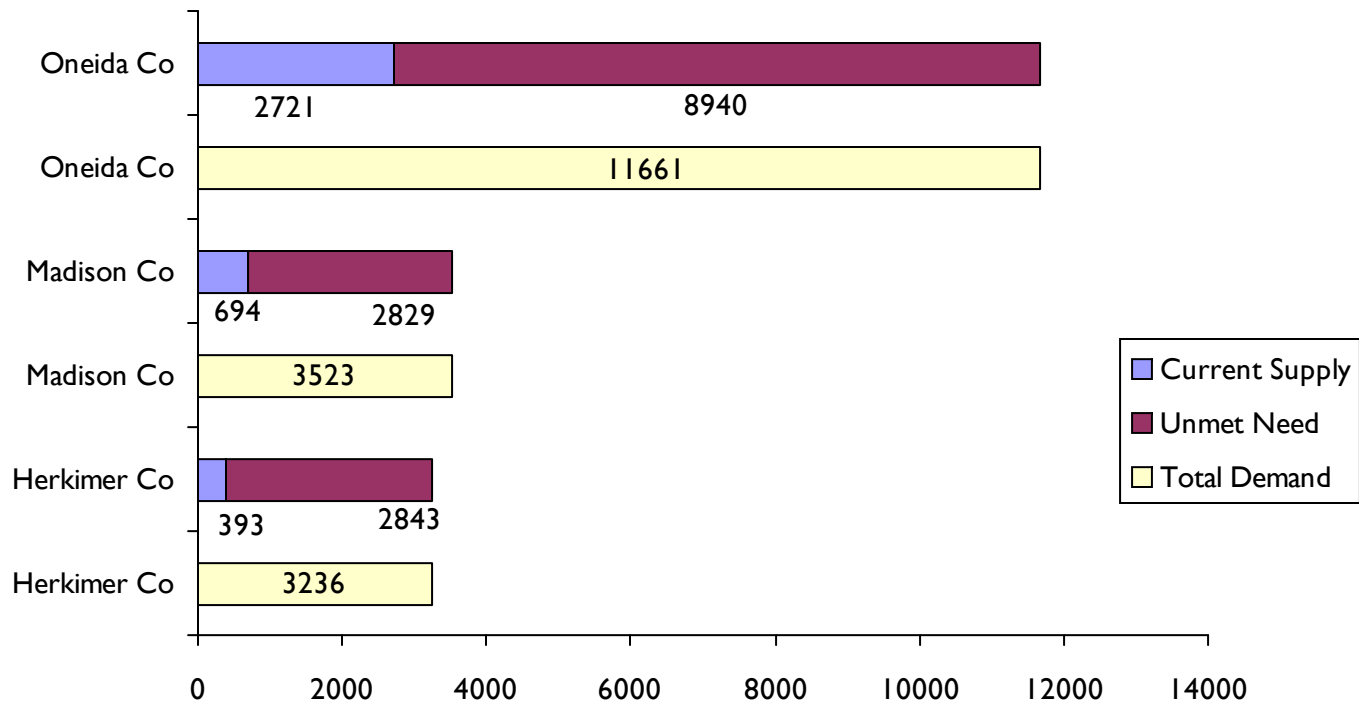
Potential Unmet Child Care Need,

children 6 wks to 5 yrs



Part II: Demand for Child Care

Potential Need Children 6 yrs—12 yrs.



The graph above illustrates the total number of potential child care slots (yellow), the number of current child care slots (blue), and an estimation of potential unmet need (red) for children school age children ages six to 12-years-old. Based on this graph, for each potential child care slot:

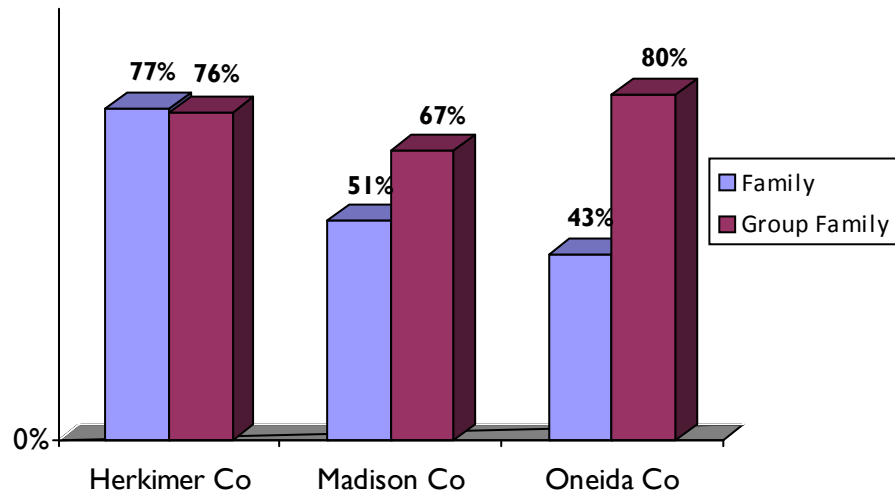
- ◆ 7 Herkimer County children are in need of care
- ◆ 4 Madison County children are in need of care
- ◆ 3 Oneida County children are in need of care

Note: The potential unmet demand for child care does not take into account children who are currently cared for by legally exempt child care providers, in-home nannies, friends, relatives or other unregulated types of care. Or for those school-age children who are left home alone. Supply and demand of care also varies significantly depending on the age of the child and the location care is sought.

Part III: Child Care Slot Utilization

The graphs on this page illustrate the utilization rate of potential child care slots within Herkimer, Madison and Oneida counties. The rate is based on figures collected from a sample of programs.

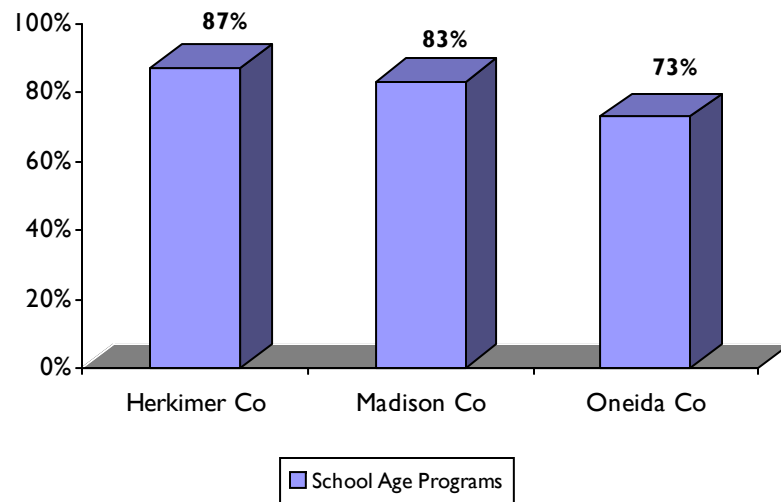
Family/Group Family Child Care Home Utilization



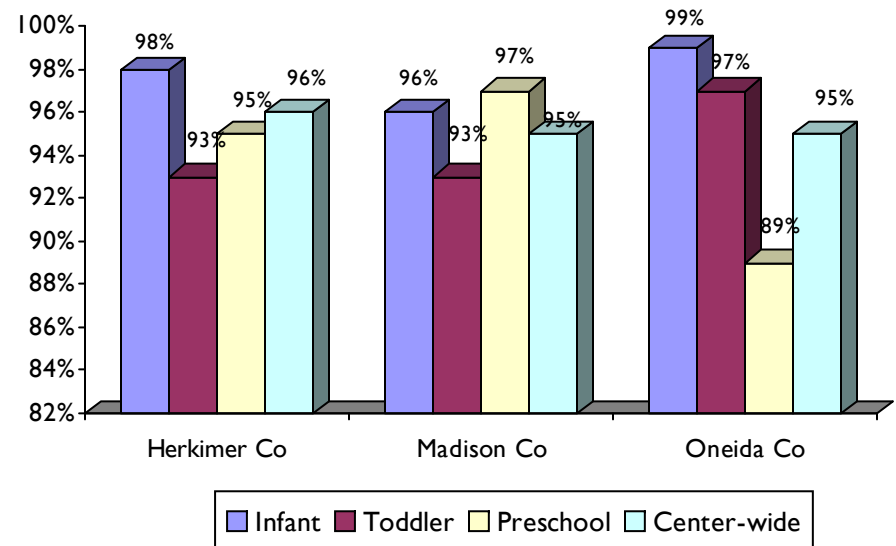
When considering utilization for family/group family child care programs, it is important to keep in mind that potential slots reflect the maximum number of slots a program is registered or licensed to serve, and sometimes does not reflect the actual number of potential slots a program may currently have available. This discrepancy is due to the variation in maximum slot availability based on the age of children in care (see page 18 for additional information on how the age of children cared for in a family/group family home effects maximum capacity).

Child care slot utilization changes often—sometimes daily. Therefore, it is important to remember that the utilization rate presented in this document is only an estimation of the percent of child care slots utilized within the tri-county area.

School-Age Care Utilization

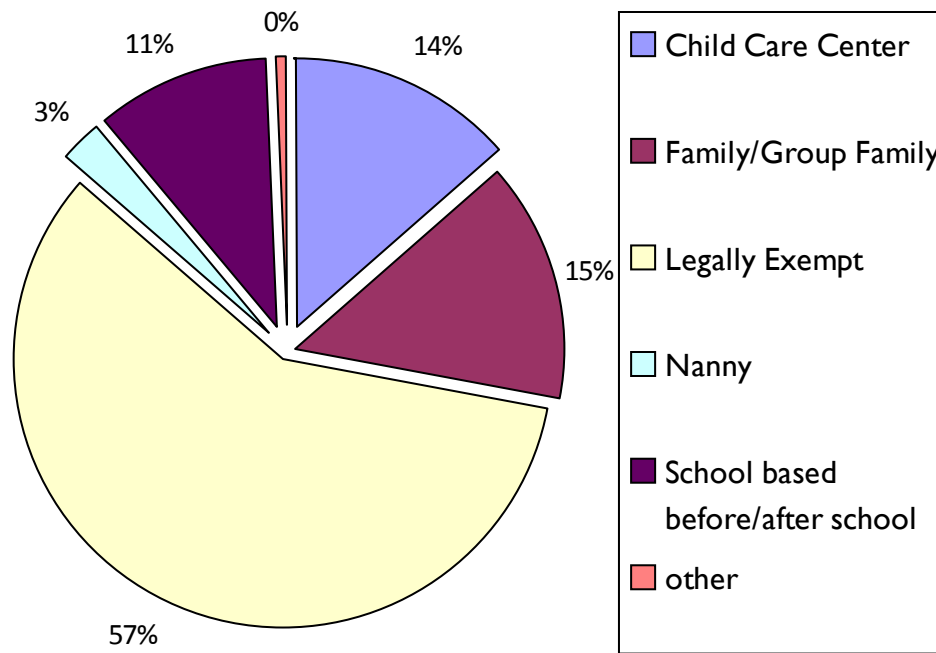


Child Care Center Utilization



Part III: Types of care utilized

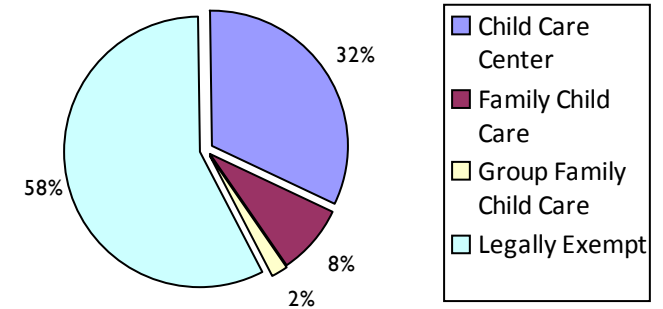
Care Utilized by Surveyed Parents, August 2008



Note: Total percentage is greater than 100 percent as some survey participants indicated utilizing multiple modalities of care.

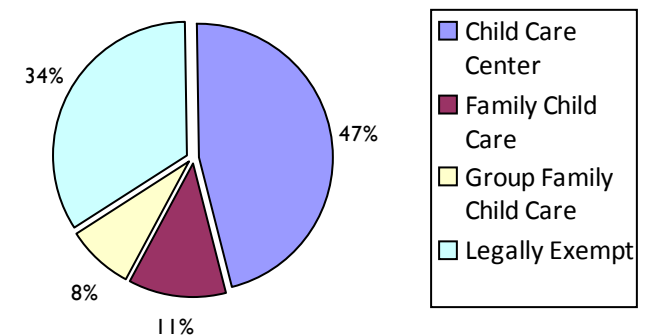
The Herkimer, Madison & Oneida county graphs on this page (right top, center & bottom) illustrate the number of subsidy-eligible children from each county who utilize NYS regulated child care. This information has been obtained from the local county department of social services. The graph above illustrates the type of care a surveyed group of parents in the service area indicated utilizing per a phone survey conducted by Zogby International (see page 16 for more information).

Herkimer County



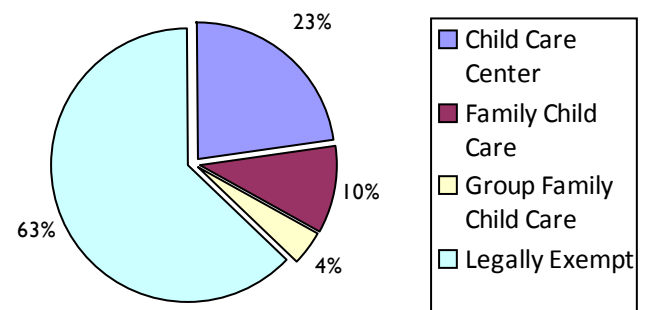
Herkimer County total subsidy-eligible children represented in this graph = 306.

Madison County



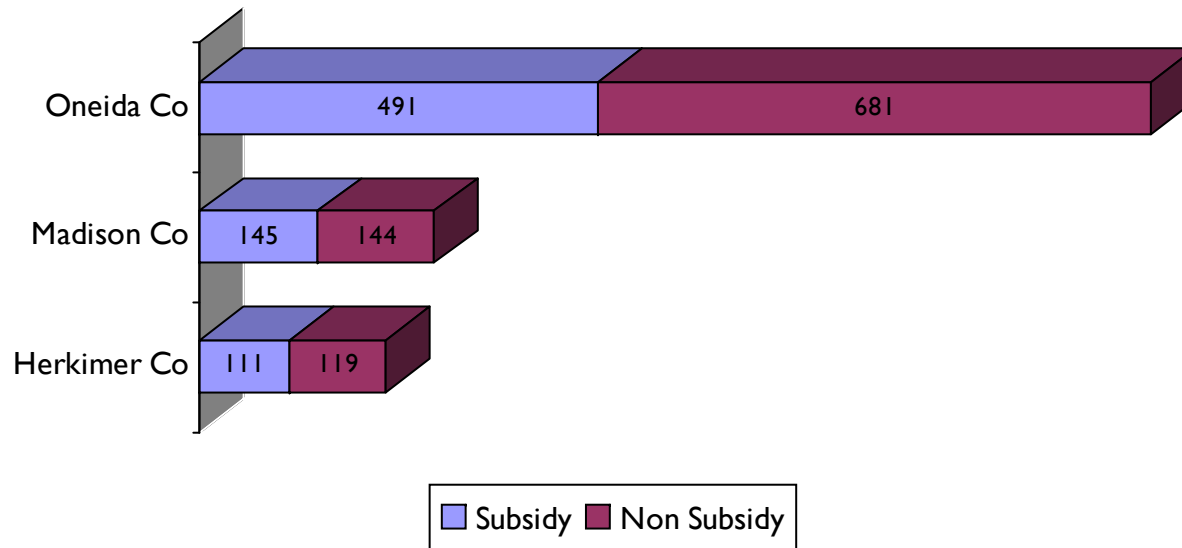
Madison County total subsidy-eligible children represented in this graph = 112.

Oneida County



Oneida County total subsidy-eligible children represented in this graph = 1974.

Child Care Referrals Provided

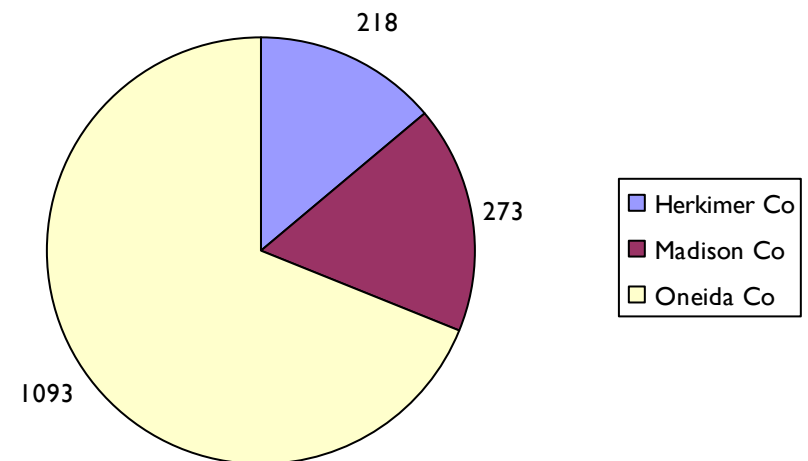


The graph at the left indicates the number of referrals the Child Care Council completed in each of its counties of service in 2008. This number counts separately the number of multiple referrals completed for families, if requested by the family after the initial referral. Multiple referrals for the same family may be the result of different search criteria including location of care, days or hours of care, or modality of program sought.

The graph on the right indicates the number of children served by the child care referrals performed by the Child Care Council during 2008. Of the 1584 referrals provided:

- ◇ In Herkimer County, 47 percent of children were eligible to receive a subsidy from their county’s department of social services to assist with the cost of child care; 53 percent were not eligible for subsidies,
- ◇ In Madison County, 49 percent of children were subsidy-eligibly, 51 percent were not, *and*
- ◇ In Oneida County, 43 percent of children were eligible to receive subsidy, and 57 percent were not.

Number of Children Served



Part IV: Parent Child Care Referrals

Referral Follow-Up Information

Herkimer County	Low Income/ Subsidy Eligible Children	Non-subsidy Eligible Children	Total Children
Referred	103	115	218
Follow-Up Info Retrieved	62	51	113
Found Care as per Follow-Up	24	32	56
Did not find care per follow-up	38	19	57

Madison County	Low Income/ Subsidy Eligible Children	Non-subsidy Eligible Children	Total Children
Referred	134	139	273
Follow-Up Info Retrieved	70	68	138
Found Care as per Follow-Up	38	42	80
Did not find care per follow-up	32	26	58

Oneida County	Low Income/ Subsidy Eligible Children	Non-subsidy Eligible Children	Total Children
Referred	467	626	1093
Follow-Up Info Retrieved	248	252	500
Found Care as per Follow-Up	97	100	197
Did not find care per follow-up	151	152	303

Who found care?

The tables on the left represent the total number of referrals completed for each county in 2008. The tables also indicate the number of quality-assurance follow-up calls were made to the individuals who requested the initial referral, and the number of those who indicated whether or not they secured care as the result of the referral.

Based on the follow-up information obtained for the each county's total follow-up information:



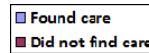
> In Herkimer County, 50 percent of individuals indicated that they secured child care for their child(ren) as a result of the child care referral; 50 percent did not find care.



> In Madison County, 58 percent of individuals were able to find child care through their child care referral; 42 percent were not.

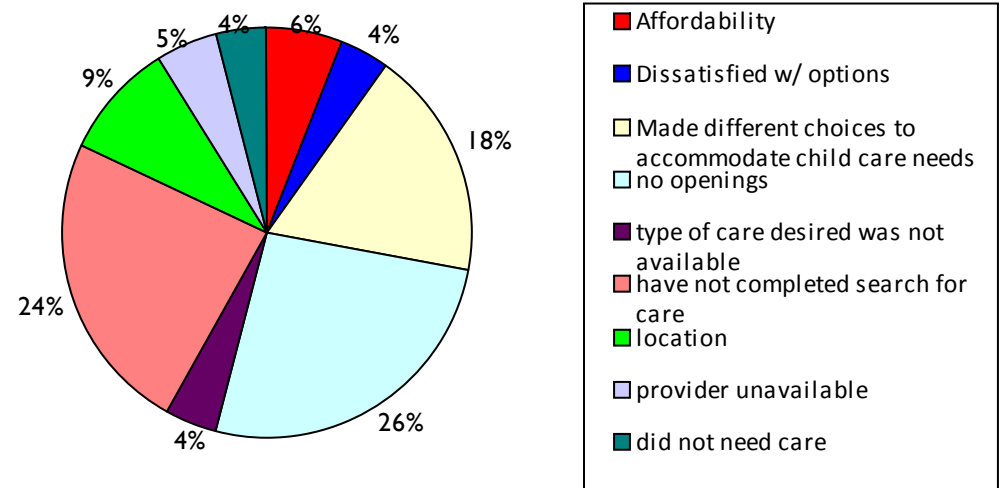


> In Oneida County, 39 percent of individuals secured child care as a result of their child care referral; 61 percent did not.



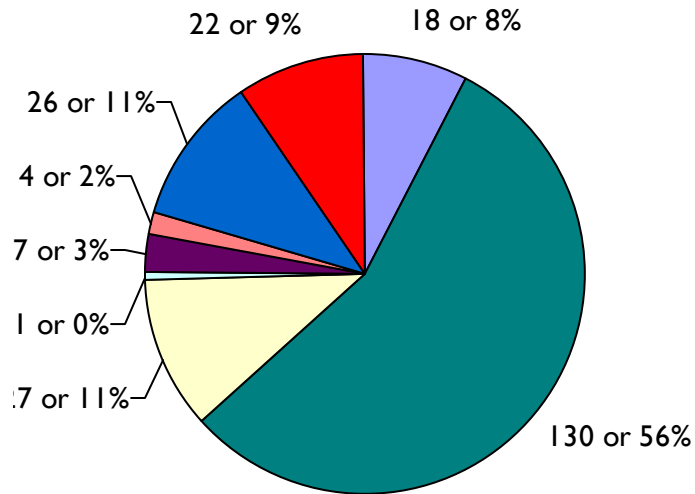
Why didn't they find care?

A component of follow-up surveys includes discussing with the parent why they were not able to secure child care following their child care referral. The following graph represents reasons parents indicated as deterring their search for child care:

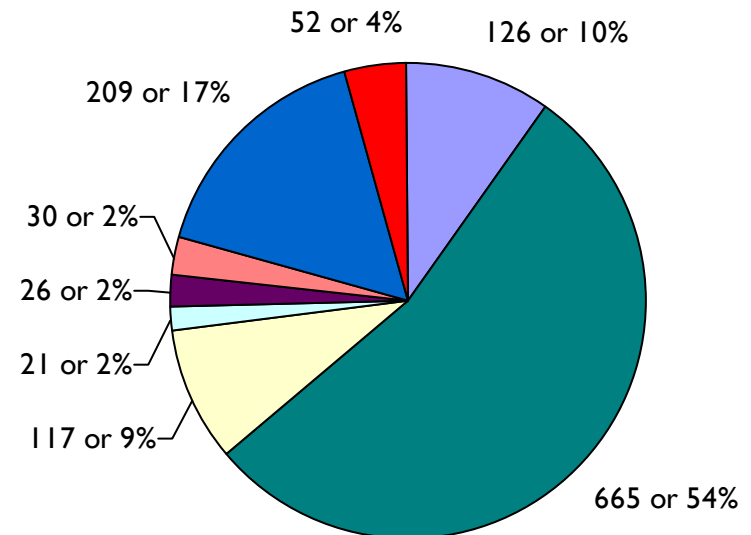


Part IV: Parent Child Care Referrals Where Do Our Referrals Come From?

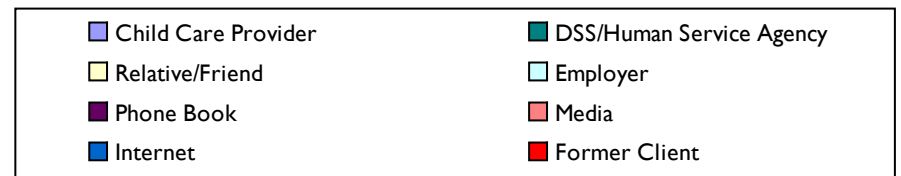
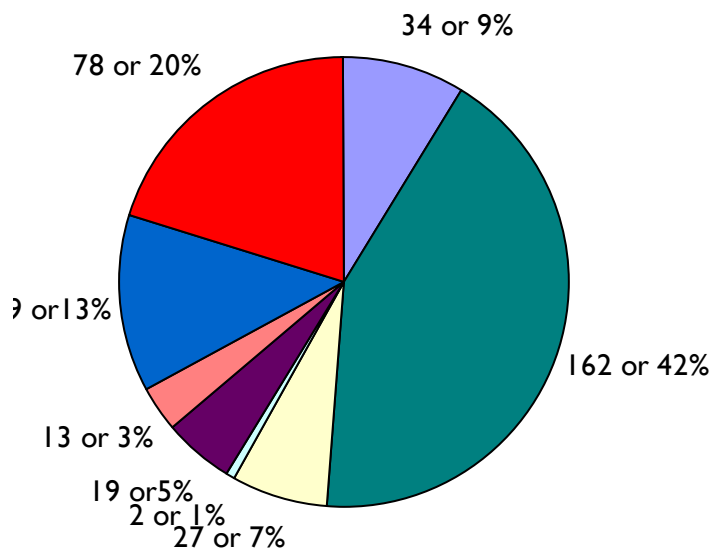
Herkimer County



Oneida County



Madison County



The Child Care Council is committed to raising awareness about our services to all community members in each of our counties of service to best assist all families in need of securing child care. The graphs on this page illustrate the resources the Child Care Council utilizes to advertise our referral services, and the percentage of parents who indicated each resource as the medium for which they learned of our services.

Mid-York Child Care Coordinating Council commissioned Zogby International to conduct a telephone survey of parents currently utilizing child care in Herkimer, Madison and Oneida counties. The survey was conducted from July 28 to August 10, 2009. The target sample was 400 interviews with approximately 53 questions asked. Samples were randomly drawn from telephone CDs of national listed sample. The margin of error is +/- 5.0 percent.

Type of care utilized



Seven in ten parents say they use informal child care, or care that is provided by a family member or friend

One-sixth of families indicate they use registered or licensed family, group family or center-based child care program.



New programming



- Two-fifths of parents would consider utilizing a program for their school age child if one was created in their community
- One-fourth would consider utilizing a program that offered drop-in child care
- One-fourth would consider utilizing a program for their 6 week to preschool age child if one was created in their community

Satisfaction



- More than half of parents indicated that they have a child care program that suits their needs
- Nine in ten parents are very satisfied w/ their caregiver
- More than half have never missed work because of child care issues
- Six in ten say they have never been distracted at work because of child care issues

Cost of Care

- 74 percent of parents utilize their family income to cover the expense of child care
- More than half of parents are not concerned about the cost of maintaining child care, but more than one-third do



Dissatisfaction

Major reasons of dissatisfaction are inadequate learning activity and lack of confidence with experience and knowledge of caregiver



Additional information on the 2008 Parent Child Care Survey can be obtained by contacting the Child Care Council.

Appendix I— Child Care Program Definitions

Types of New York State Regulated Child Care:

Child Care Center—care for a group of children for more than three hours per day, not in a personal residence, which must meet NYS Office of Children and Family Services licensing regulations for facility, health, safety, staffing and educational programming. In this setting, children are cared for in groups separated by age (infants—6 weeks to 18 months; toddlers—18 to 36 months; preschoolers—3 & 4 year olds; school-age—5 to 12 year olds).

Registered Family Child Care—child care provided in the child care professional’s personal residence (or other home setting) for up to six children including the provider’s own (fewer if care is provided for infants) with an expanded capacity to serve two additional school-age children. Family child care programs must be registered by the NYS Office of Children & Family Services.

Licensed Group Family Child Care—child care provided in the home setting by a primary child care professional and an assistant for up to 12 children including the provider’s own (fewer if care is provided for infants), with an expanded capacity to serve two additional school-age children. Group family child care providers are licensed by the NYS Office of Children & Family Services.

School-age Child Care Program—care for a group of school age children from kindergarten through age 12 before and after school and at times when school is not in session. Many school-age programs provide care during school vacations and holidays. School-age care may be provided by child care centers, family/group family child care homes, public schools, youth recreation groups, religious organizations and other community groups. Depending on the sponsoring organization, school-age care programs are regulated by NYS Office of Children and Family Services or the NYS Department of Education.

New York State Pre-Kindergarten—state funded public school pre-kindergarten programs offered to four-year-olds by school districts electing to participate in the Universal or Experimental Pre-K Programs. Available programs are advertised to families through their local school districts. These half-day programs may operate at a school or non-school site and can be coordinated with other programs to provide extended care in the mornings and later afternoons to allow for full-day care (often called wrap-around programs).

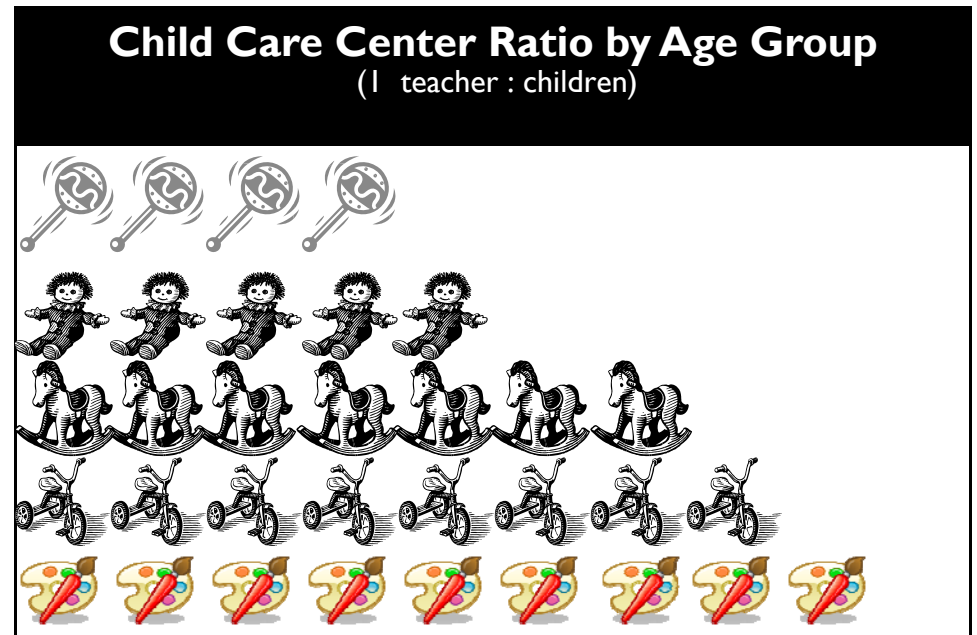
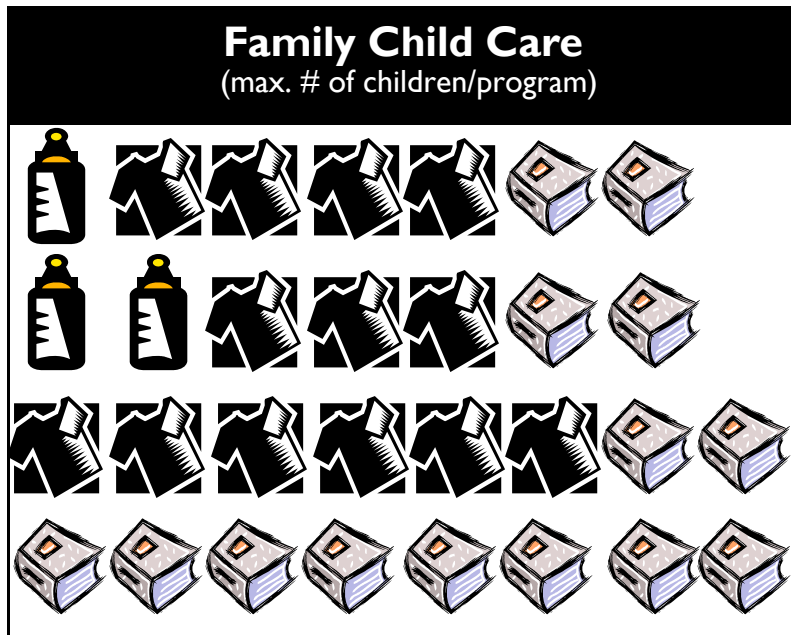
Head Start/Early Head Start—a federally funded program for three to five-year-olds (six-weeks to three-year-olds for Early Head Start) for families who meet established household income criteria. Head Start offers a comprehensive child development program, including health, nutrition and family support services. Parent involvement is an integral part of the program. Head Start programs can be part-day, full-day or home-based.

Modalities of Care Exempt from New York State Regulation:

Preschool/nursery school—care programs for three to five-year-olds. Preschools operate for less than three hours a session, two to five times a week, and often follow a school-year schedule. Preschools may voluntarily register with NYS Department of Education, which sets guidelines for facility, staff and programming.

In-home care—full or part-day child care provided by an adult (sometimes a relative) or Nanny in the child’s home. According to legislation passed in 1998, parents are allowed to request fingerprints from prospective caregivers (who will provide in-home care for more than 15 hours per week) from the State Department of Criminal Justice.

Legally exempt care—child care provided in the home setting for no more than two children who are not related to the provider. Legally exempt providers are not required to be certified by NYS Office of Children and Family Services, however, effective July 31, 2006 new regulations will require additional monitoring of legally exempt providers. Legally exempt providers caring for subsidy eligible children can receive payment for care services by the local Department of Social Services (at a rate lower than regulated child care programs).



Note: Additionally, ratios for school-age children in child care centers or school age care programs include: school-age children through 9 years old—1:10, and children 10 to 12 years old—1:15.

KEY	Infant 6 wks- 24 mo		Toddler 18 mo- 3 yr	
	Pre- Schooler 24 mos-5 yr		Pre- Schooler 3 yr-4yr	
	School-age 5 yr— 12 yr		Pre-K 4 yr	
	Infant 6 wk— 18 mo		5 yr old	

Milestones	HC Milestones met	+/- Milestone Goal	MC Milestones met	+/- Milestone Goal	OC Milestones met	+/- Milestone Goal
Low Income Family Referral	93	-32	125	0	400	0
Non-subsidy Family Referral	120	0	115	0	600	0
Basic technical assistance to regulated providers	119	-7	156	+6	265	0
Intensive technical assistance/hr to regulated providers	6	0	5	0	6	0
Fingerprinting	43	0	20	0	82	0
Health Care Consulting	7	0	15	0	40	0
Quality Enhancement Admin.	14	0	8	0	17	0
High Need Admin.	6	0	4	0	15	0
Legally Exempt Intensive Technical Assistance Admin.	4	0	10	0	12	0
Legally Exempt Compliance Grant Admin.	25	0	26	-4	138	0
Legally Exempt Enrollment Services	12	0	12	0	12	0
Additional Service Component	12	0	12	0	12	0
TOTAL MILESTONES MET	461	-39	508	-2	1599	0

~ From the Executive Director ~

Dear Reader,

We sincerely hope that you have found the data contained in this document useful. The chart on this page reflects the deliverables, or “milestones”, we have performed during our last child care resource and referral grant year. I am fortunate to direct a dedicated staff of 16 who work tirelessly to contribute to the ultimate goal of quality child care for every child in our community.

I’d like to thank my staff for their contribution to the completion of this date.

We hope you find the information contained in this document useful in grant writing, advocacy, identifying gaps in services for children and as an invitation to partner with us to address them. We welcome your input and your questions.

We also invite you to join us in celebrating those who work in the early childhood education field at our annual Recognition Event on Tuesday, June 2, 2009. Please consider nominating a deserving child care professional, a community member who works on behalf of children and families, and/or a family-friendly employer. Nomination forms can be found at our website, www.mycccc.org.

Sincerely,

Lorraine Kinney-Kitchen

Executive Director



MID-YORK
CHILD CARE
COORDINATING
COUNCIL
INC.

Uniting Parents & Child Care

Contact Us:
315.223.7850
888.814.KIDS

Visit us:

121 Second Street
Oriskany, NY 13424

www.myccccc.org

The Mid-York Child Care Coordinating Council, Inc. is a non-profit child care resource and referral agency whose mission is to promote and support quality child care and services related to the education and well being of children.

We are an affiliate of Cornell Cooperative Extension of Oneida County